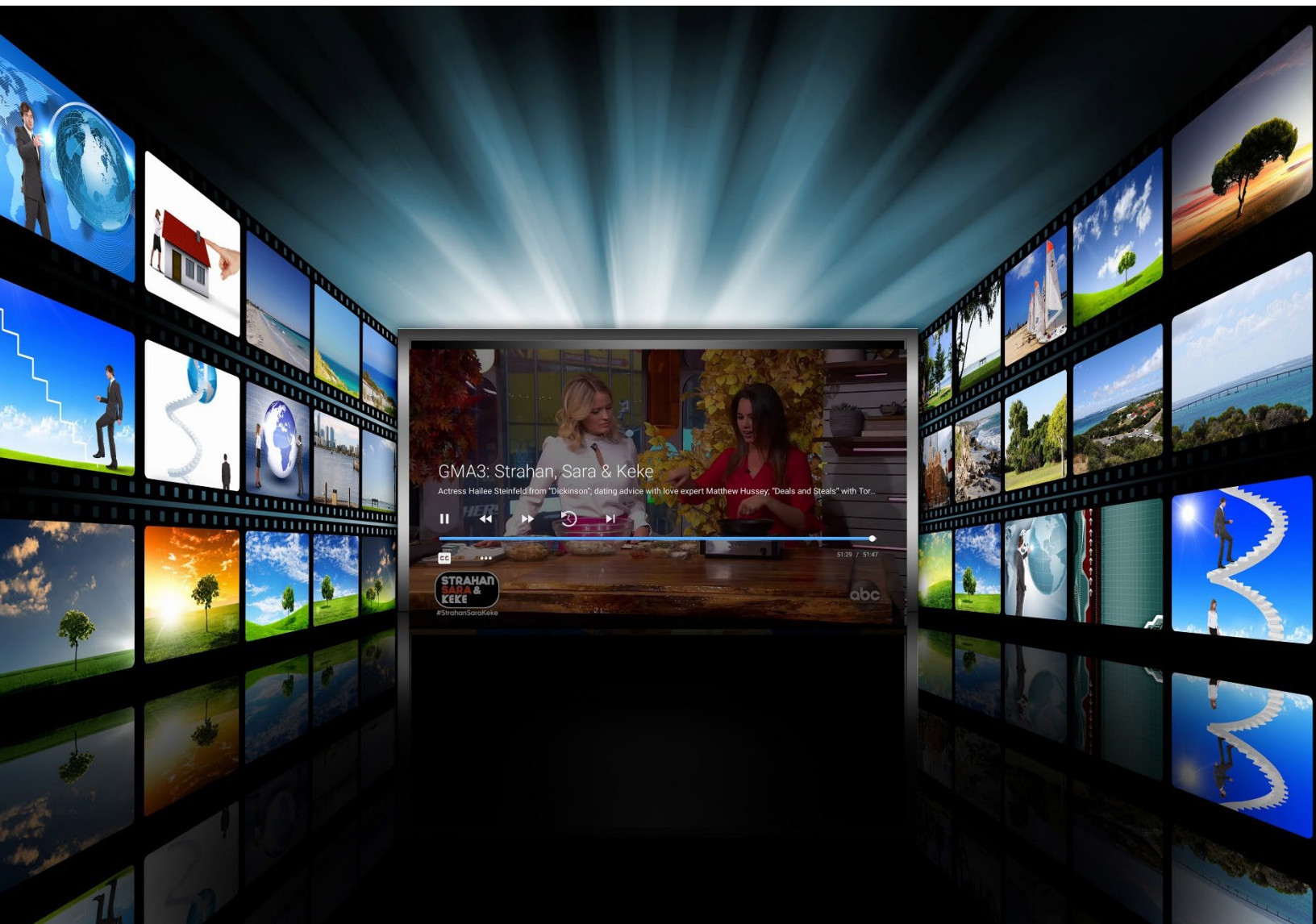




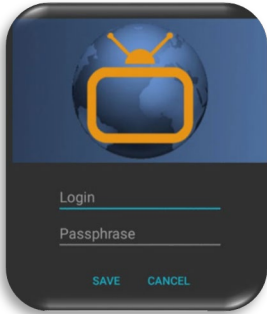
Amherst

COMMUNICATIONS



TV User Guide

With Amazon Fire Devices



Adding the Amherst TV App To Your Amazon Fire Device

To add the Amherst TV app to your Amazon Fire device, press the Home button and navigate to search and use the on-screen keyboard to type in Amherst TV and then highlight the magnifying glass and press the remote circle. The app will appear under Apps & Games. You can also use Voice Search to enter Amherst TV app.

Select and click the Get button to download the App. Once the installation is completed, you will be prompted for a Login and Passphrase. You should have received this by email.

If you have not received this information, please contact our office. After entering the Login and Passphrase press Save and then you are ready to stream.

Navigating App Content and Lists

Pressing left, right, up, or down on the remote circle will highlight specific items. Pressing in the center of the remote circle will open a highlighted item. To return to the Home Screen, press the Home button. Press the Back button to move back to the previous screen.

Watching Your Amherst TV

From the Home Screen, use the remote to highlight and expand the Amherst TV icon and press the center of the remote, "SELECT". This action will open your on-screen Program Guide.

To watch a channel, press up or down on the remote ring, "NAVIGATION" to any program highlighted in Blue and press the Play/Pause button to view a currently-airing program.



Channel Surfing

While watching a currently airing program, press the top of the remote circle to view the next higher numbered channel. Press the bottom of the remote circle to view the next lower numbered channel.

Enter Channel Number Feature

From the Program Guide, press and hold the center of your remote ring to open a screen that allows you to enter a specific channel number and then select Next to move to that channel number in the Program Guide.

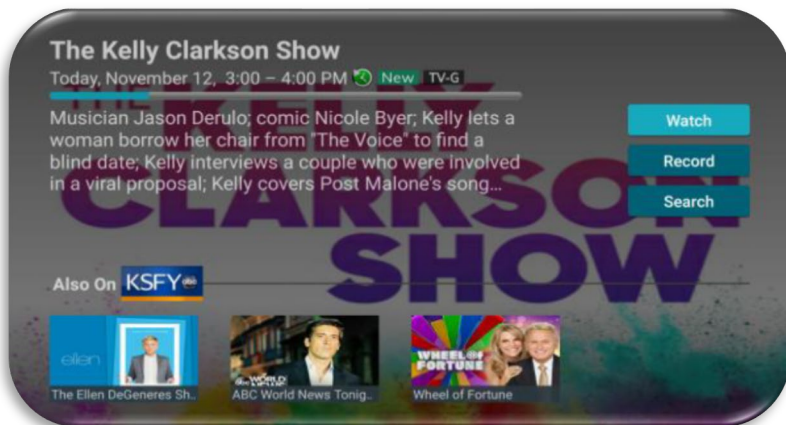


On-Screen Guide Management

From Home Screen, use the remote to highlight and expand the Amherst TV app icon and press the center of the remote. This action will open your on-screen Program Guide. Press Up, Down, Left or Right to scroll through your channel lineup. Pressing the center of your remote on a highlighted program will open a program screen with detailed information about the program. This screen will display Watch (If it is a currently airing program), Record and Search options.

To watch a currently airing program, use your remote to highlight the Watch button and press the center of your remote. To Record a program, highlight the record button, and press the center of your remote ring.

See the Record Your Programs section of this guide to learn more about recording programs. Choose the Search feature if you want to see future dates and times that this program will air or programs that have been recorded or scheduled for recording.

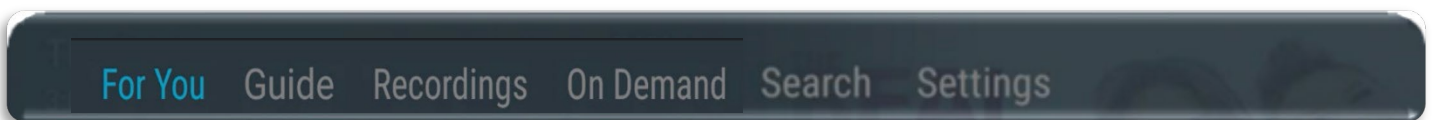


Recording Programs from the Guide

Select an upcoming or currently airing program, press the center of your remote, highlight the record button and press the center of your remote to make a recording of this program. See the Recording Your Programs section of this guide for Recording instructions.

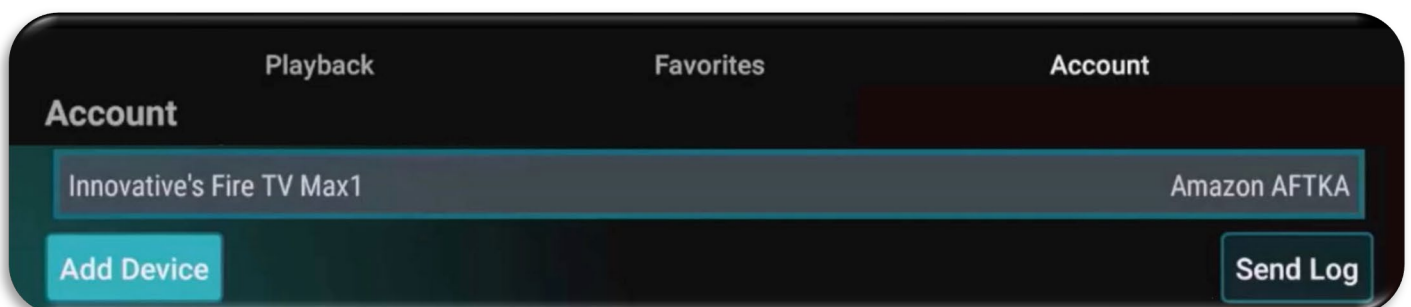
Tab Bar

From the Program Guide, press the Back button on your remote to open the Tab Bar. The Tab Bar allows you to scroll Left or Right to access the For You, Guide, Recordings, On Demand (If offered it will display), Search, and Settings options. Details on the Recording and Search options will be covered in subsequent pages of this guide.



Adding New Devices to Your Service

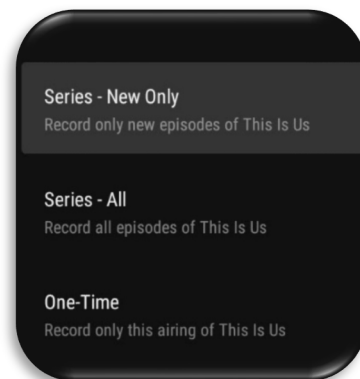
Before you add a new device to this service, go to Settings in your Tab Bar from an activated device, and highlight the Account tab. Press the bottom of the remote ring to highlight Add Device, and then press the center of your remote ring to generate a Login and Passphrase for the new device. Follow the directions at the beginning of this guide for adding this service to your new Amazon device and use the displayed Add Device Login and Passphrase when you are prompted to activate the service.



Recording Your Programs

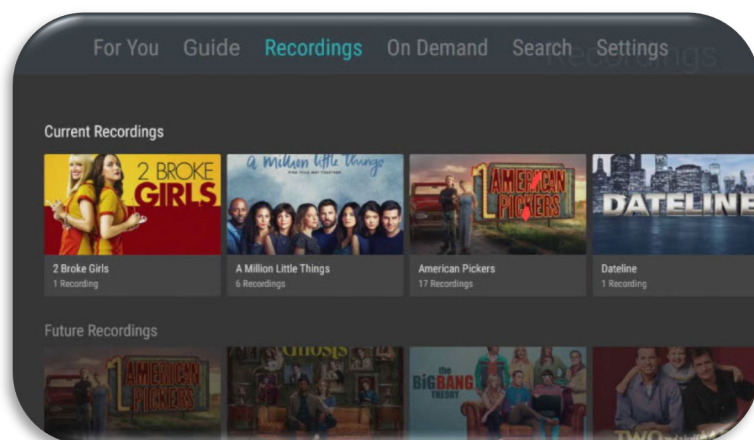
Making a Recording

When you select Record, a screen will display that gives you the options for setting a Recording Series Rule for this program. You can record only new episodes (Series - New Only), record all episodes of this program (Series - All), or a One-Time recording of this program. Check out the Series Rules section of the guide to learn how to manage your Series programs.



Watching Your Recordings

Recordings can be viewed from either the Recordings or Search screen options. Select Recordings from the Tab Bar to open the Recordings screen. Here you will see a list of your Current Recordings, Future Recordings, and Series Rules.



Scroll through the list of Current Recordings, highlight the program you want to watch, and press the Play/Pause button to start watching the program. If there are multiple recordings, scroll and highlight the one you want to watch and press the Play/Pause button to start watching the program.

Selecting the Search option will display a list in Recordings of programs. You can highlight Watch and press the center of your remote ring to start watching the program. The Search feature will be covered later in this guide.

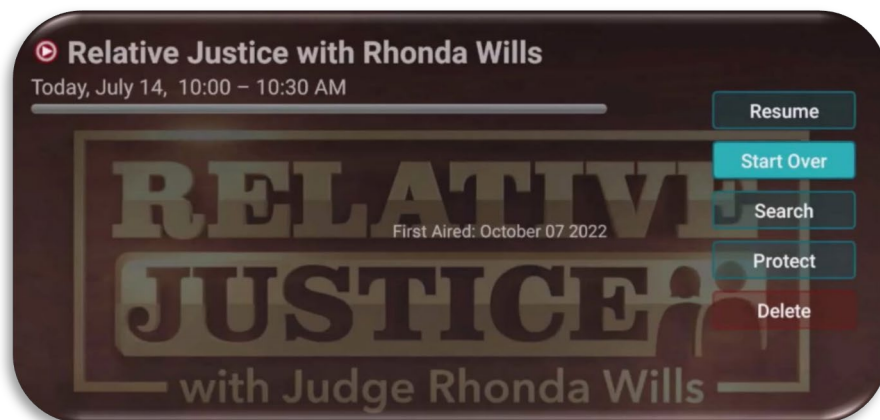
Managing Your Recordings

Current Recordings: Resume - Start Over - Search - Protect - Delete

From your list of current recordings, if you have started watching a program you have the options to Resume or Start Over, highlight your choice and press the center of your remote ring. The Search feature will display upcoming air dates of the live programs (on TV) and your Recordings for that program or series.

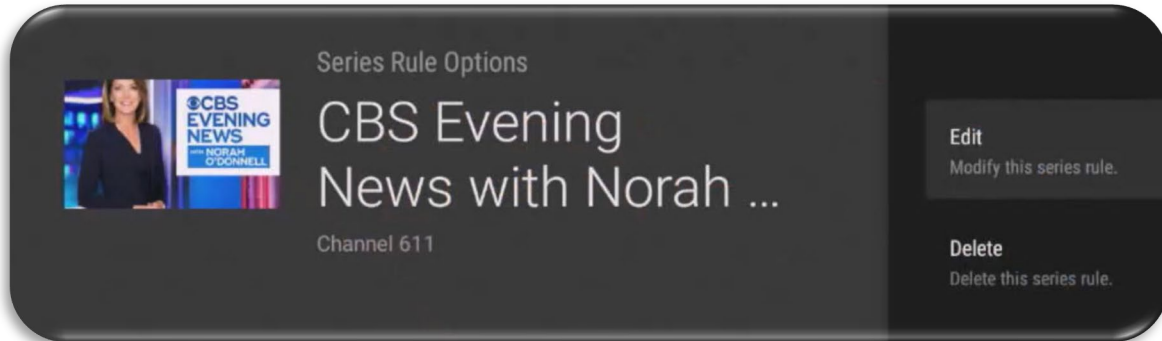
To protect a recorded program from being accidentally deleted choose the Protect option and select Yes, then press the center of your remote ring to protect it from being deleted.

You can delete a recorded program by highlighting the Delete option. If you choose to Delete a program, you will receive a prompt asking you to select Yes to confirm your deletion.



Manage Series Program Recordings with Series Rules

Use the Series Rules feature to manage the episodes of a series that you want recorded automatically. From the Recordings screen, press the bottom of your remote control till you have highlighted Series Rules to see a list of series programs you have scheduled for recording.



Scroll through the list and highlight a series that you want to manage. Highlight Edit and press the center of your remote to open a Series Rules Options screen.

Use your remote to navigate and select Recording Type – Select Keep At Most to choose a maximum number of episodes that you want to keep of this series, Only New Episodes, or you can choose to keep All Episodes.

Start Recording or End Recording options allow you to manage in minutes the start or end times for the series recordings, earlier or later than their originally scheduled times. This feature is particularly useful for sports events that can run past their scheduled end times.

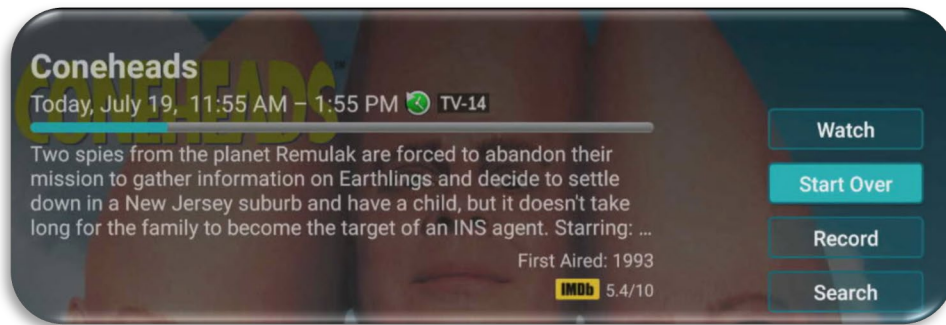


You can delete all the Series Rules for a program by highlighting the Delete button and pressing the center of your remote. This deletes the any future recordings of this series but does not delete the existing Series Recordings.



Restart TV

This popular feature lets you go back to the beginning of any currently-airing or in-progress recorded program that has the Restart Option. Programs that have the Restart option display a Green Restart icon in the program description. From the Program Guide, highlight a currently airing program and press the center of your remote ring. Press the top or bottom of your remote ring until you have highlighted Start Over, press the center of your remote ring and the program will Restart from the beginning.



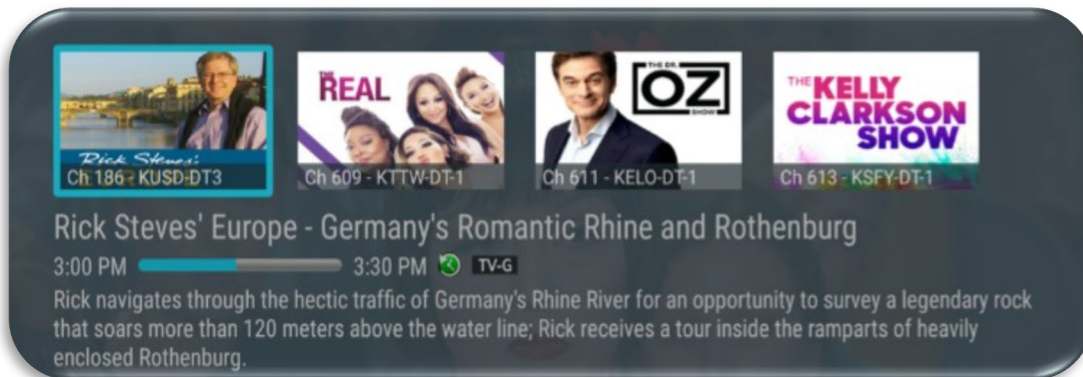
Pause Live TV

Life happens and there may be times when you need to take care of something while watching your favorite program. While watching live TV, press the Play/Pause button on your remote once to pause the program. To continue watching, press the Play/Pause button once.

Quick Guide



During a recorded or live program press the menu button to pull down a menu list of your most recently watched channels. Scroll left or right to choose a new channel and press the center of your remote ring to watch it.



For You

if you prefer a poster view format instead of a traditional Channel Guide look, For You gives you quick access to Channels You have Watched, Channels Popular in Your Area, Recordings, and even the Weather. From the Program Guide, press the Back button on the remote to open the Tab bar, and press the left side of the remote ring to select the For You Option, use your remote ring to navigate through and select what you would like to watch.

FAST FORWARD AND REWIND FEATURES

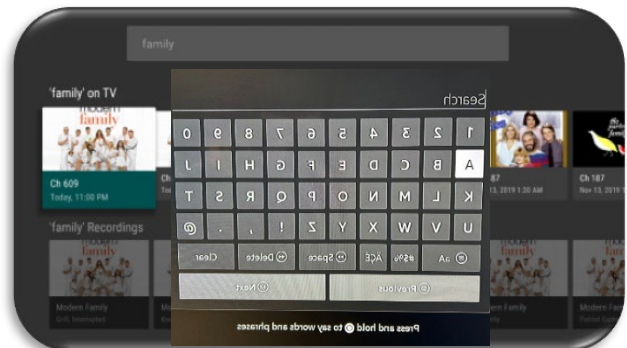
There may be times when you want to go back and see that exciting play in the game. To use this feature during an in-progress or recorded program, press the Fast Forward button on your remote control to advance the program, and press the Rewind button to go back. The Progress Bar lets you track your movement through a program, and the timer helps you to see how far you are from the end of the program.



Program Search Feature

You can use the Search feature to find Live, Recorded, and Future programs. From the Program Guide, press the Back button to open the Tab Bar, scroll right to the Search feature, press on the lower part of the remote ring, and then press the right side of the remote ring to open a typing pad. You can manually type in a program search by typing in letters of a program for which you are searching. To use the voice search, press and hold the Microphone button while saying the name of the program you are looking for. **Note:** The typing pad must be visible when doing a voice search with the microphone.

The results will be specific if you type in or pronounce more letters in the name of the program. You can also use the search feature to find specific types of programs, like a program with the name "Today" in the title. To view your search results, highlight Next on the keypad and press the center of your remote ring.



The search results will show currently airing or upcoming programs in the top row, the on TV list. Highlight a program, press the select Watch to view the program or Record to add this program to your future recordings. The bottom row will show programs that have been recorded or future recordings. Highlight a recorded program you want to watch and press the center of the remote to watch the program. You can also select Delete if you want to remove the program from your recordings.

Closed Captioning

To turn on CC while a program is playing, press the Play/Pause button and press the bottom of the remote ring until the CC icon is highlighted. You can then press the center of your remote ring to activate CC. Follow the same steps to deactivate the CC feature.